

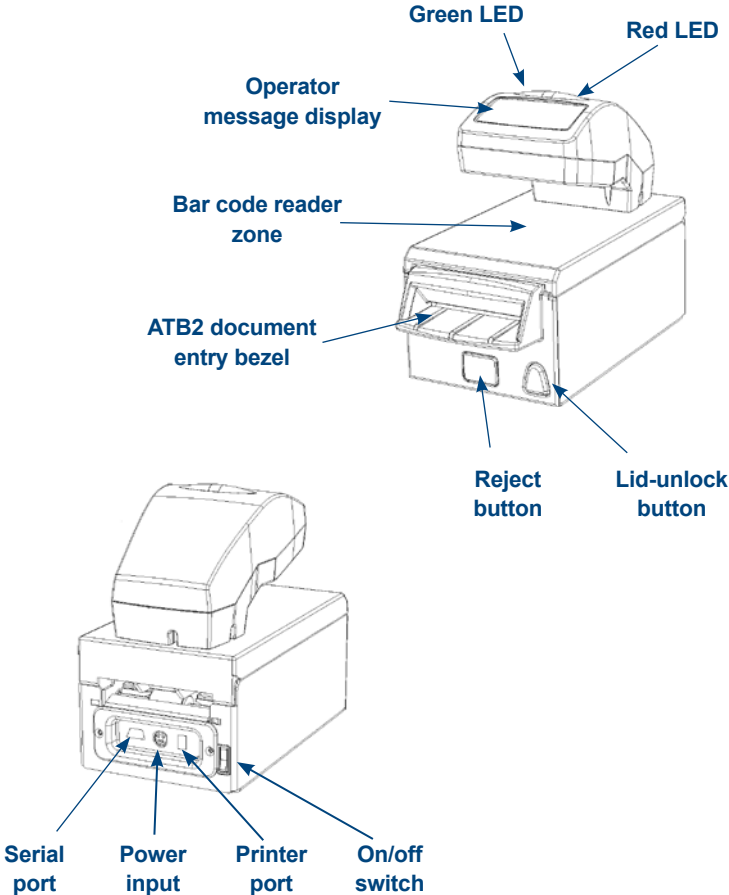
BGR120M Boarding Gate Reader

User Guide

Introduction

The BGR120M is a combined motorised, four-track ATB2 reader and bar code imager for airport gate reading applications.

For the latest information, go to www.access-is.com

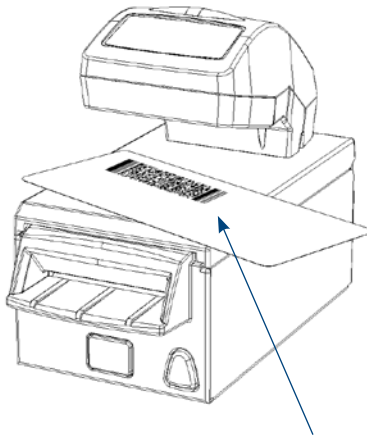


Bar Code Reader Operation

To read a bar coded boarding pass, place the document face up into the bar code reader zone. As soon as a document is detected, the bar code reader's LEDs will illuminate the document. The bar code imager is omni-directional and a well printed document should read almost immediately.

Better read performance will be achieved if the document is held flat on the surface under the bar code reader.

The boarding application will determine if the document is valid and a message will be sent to the operator message display. Either the green LED (OK to board) or the red LED (do not board) will light.



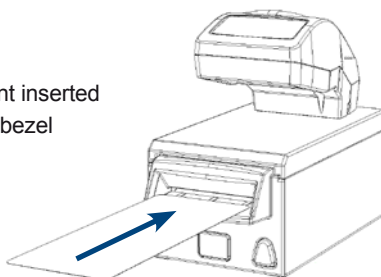
Hold the document flat and face up on the lid surface with the bar code under the bar code imager illumination lights

ATB2 MSR Reader Operation

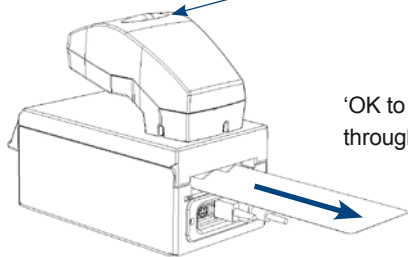
To read an ATB2 MSR encoded document insert the ATB2 printed side up into the ATB2 entry bezel. The motor transport will start as soon as the document is detected. The BGR120M has two read heads allowing the document to be inserted in either orientation, with the back, magnetic side always facing downwards.

Once read, the ATB2 document will be held within the BGR120M until the boarding application determines if the document is valid. A message will be sent to the operator message display and either the green LED (OK to board) or red LED (do not board) will light.

ATB2 document inserted
through entry bezel



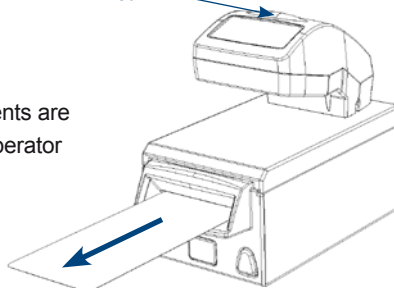
Green LED



'OK to board' documents pass
through the BGR120M

Red LED

Rejected documents are
returned to the operator

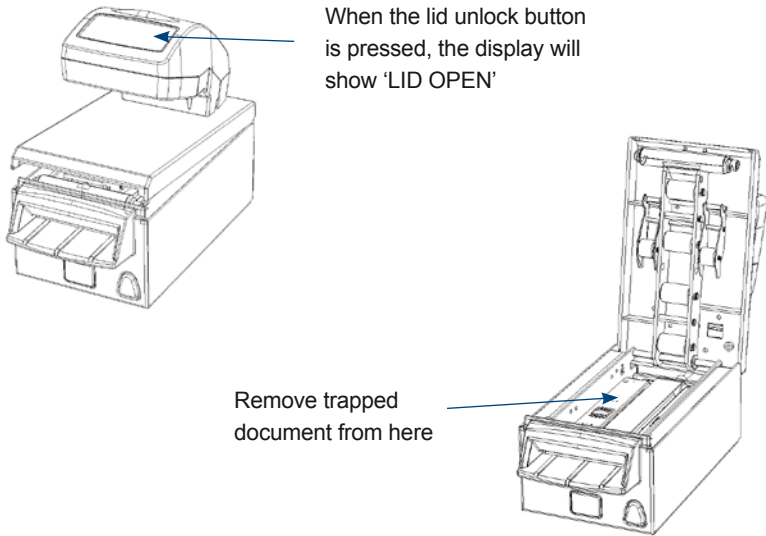


Rejecting a Jammed ATB2 Document

If the BGR120M does not eject the document it may have become stuck inside the reader. This can be caused by a lack of response from the host or a jam.

Press the reset button and the document should return to the operator. If the document is jammed, then the mechanism can be opened by pressing the lid unlock button. The mechanism will spring open slightly. Carefully open the hinged lid of the BGR120M and extract the document. To avoid any risk of the lid closing unintentionally, hold the lid while the jammed document is removed. Close the reader by seating the lid back down and applying slight pressure on the lid until the mechanism latches shut.

It is not necessary to cycle the power to the reader while opening the mechanism.



Access 

Interfacing Solutions

Access IS
18 Suttons Business Park
Reading, Berkshire
RG6 1AZ, United Kingdom
Tel: +44 (0) 118 966 3333
Fax: +44 (0) 118 926 7281