

# EXT Series Video and Audio Distribution Extenders

**A comprehensive range of high-resolution video and CD quality audio for digital signage and media streaming.**

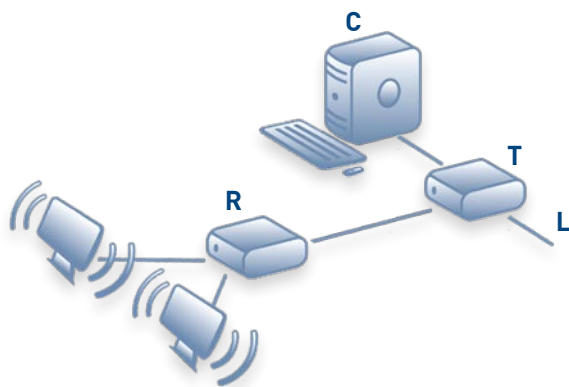
## Description

The EXT Series of audiovisual extenders deliver high video resolution and CD quality audio over distances up to 300 metres using standard CAT5, 5e, 6 and 7 cable. Using standard CAT cabling, the EXT series offer control of displays while avoiding the high costs associated with fibre-optic cabling, the use of displays with integrated CPUs or providing local CPUs adjacent to screens.

EXT models offer full RS-232 support, allowing video display panels to be controlled and interrogated remotely. In addition, these devices are supplied complete with display manager software which makes controlling VDU power, video and audio possible from the transmitter, as well as allowing you to interrogate video panel status and dynamics. Alternatively, any third party signage control system can be used across the EXT200 series.

The innovative design allows for flexible audiovisual distribution, management, control and interaction with the display devices which can be expanded to grow in line with project developments.

Where multiple transmitters are required, industry standard 3U racking solutions are also available.



*A simple system where a single CPU (C) controls two screens via transmitter (T) and receiver (R); cascade link (L) available to connect to a further transmitter*



*EXT200 receiver showing two audio and video output connectors*

## Features

### Video performance

Market leading resolutions of 1600x1200 pixels over 200 metres and 1280x1024 pixels over 300 metres.

### Display management via RS232 (certain models only)

Included with EXT transmitters, easy-to-use software provides control over display via the integrated RS232 ports. This enables bi-directional and automated communication with individual screens, groups of screens or all screens at the same time.

### Video compensation and brightness control

The EXT units can apply a high level of signal compensation and brightness correction that ensures the image is crisp, clear and bright over long distances.

### Audio

Digital audio transmission delivers high fidelity; click-less audio for speakers and microphones.

### Integrated DeSkew

The EXT has integrated skew correction with a 300MHz bandwidth and allows the receiver to be located further from the transmitter or cope with higher video resolutions.

Access IS  
18 Suttons Business Park  
Reading, Berkshire  
RG6 1AZ, United Kingdom  
Tel: +44 (0) 118 966 3333  
Fax: +44 (0) 118 926 7281

Access (North America) inc  
PO Box 2569, Peachtree City  
Georgia 30269-2569  
USA  
Tel: +1-770-631-8425  
Fax: +1-678-364-8856

**Access IS**  
Interfacing Solutions

## Part Numbers: EXT100 Models

Model Number	Description	RS-232 Control	Integrated DeSkew	Case Size (See Below)
EXT100T	Single port transmitter with cascade function	No	No	A
EXT104T	Four port transmitter with cascade function	No	No	A
EXT100R	Receiver with two outputs	No	No	A
EXT101R	Receiver with two outputs and cascade option	No	Yes	A

## Part Numbers: EXT200 Models

Model Number	Description	RS-232 Control	Integrated DeSkew	Case Size (See Below)
EXT200T	Single port transmitter with cascade function	Yes	No	A
EXT204T	Four port transmitter with cascade function	Yes	No	B
EXT208T	Eight port transmitter with cascade function	Yes	No	B
EXT200R	Receiver with two outputs	Yes	No	A
EXT201R	Receiver with two outputs and cascade option	Yes	Yes	A

## EXT Series Video and Audio Distribution Extenders

### Specifications

#### Connections

**Audio in/out:** 3.5mm audio jack

**Video in/out:** HDD15

**CATx connector:** one RJ45 per output on transmitters; single input connector on receivers

**RS-232 in/out (certain models):** Transmitters have a single DB9F and receivers have a single DB9M

**Power:** 2.5mm DC jack

#### Indicators

Units are fitted with two indicators; red indicates the module is powered and green indicates the presence of a video input

#### Power supply

100-240VAC universal power adapter with IEC input connector; country specific, changeable power cord supplied

#### Mechanical / dimensions

All devices are in steel housings  
Case A: 98 x 95 x 25mm  
Case B: 185 x 95 x 51mm

#### Environmental

**Temperature:** Operating 0°C to +40°C

**Humidity:** 0 to 95%, non-condensing

**Approvals:** FCC & CE

© All trademarks acknowledged

Access IS  
18 Suttons Business Park  
Reading, Berkshire  
RG6 1AZ, United Kingdom  
Tel: +44 (0) 118 966 3333  
Fax: +44 (0) 118 926 7281

Access (North America) inc  
PO Box 2569, Peachtree City  
Georgia 30269-2569  
USA  
Tel: +1-770-631-8425  
Fax: +1-678-364-8856

**Access**   
Interfacing Solutions

For further information email: [sales@access-is.com](mailto:sales@access-is.com) or visit our website: [www.access-is.com](http://www.access-is.com)

All trademarks acknowledged. Specifications subject to change without prior notice. This literature is for outline information only.