

# LSR120 2D Bar Code Imager

**Access' LSR120 is a high performance, fixed position bar code imager for check-in gate applications.**

## Description

The Access IS LSR120 bar code imager has been optimised for airport bar code document scanning applications and is designed to operate in demanding airport environments. Ruggedly constructed with no moving parts the devices are built to withstand years of use. The LSR120 can be configured to connect directly to a workstation or through an Access IS ATB42x series integrated keyboard. Serial RS232 and USB (serial or keyboard) interface versions are available.

The LSR120 is a high performance 2D omnidirectional bar code imager and captures bar codes within a second of presentation. A bright green indicator and sounder confirm a good read. The serial and USB versions of the LSR120 may be configured with data format settings as standalone devices, and the USB versions may additionally be configured to work with the power parsing language built into the Access 'Comserv' driver.

Purpose designed to scan documents on the table top, the imager reads all popular linear, PDF417 and 2D symbologies currently in use in airports. The wide depth of field and bright aiming line allows the operator to read the bar code intuitively and without hesitation. All the operator has to do is present the document under the imager's wide field of view and the bar code is captured. The omnidirectional imaging decoder within the imager can read bar codes presented in any orientation. Very fast and consistent read performance is possible.

Capture and decode time is extremely fast. When connected to the high-speed decoded imager port of the ATB42x series keyboard or OCR standalone readers, there is almost no latency before the data reaches the workstation.



*LSR120 compact omnidirectional bar code reader*

## Features

- Fast, intuitive, omnidirectional imager with fixed focal distance
- Reads on presentation of a document face up
- Reads IATA recommended 2D PDF417 and linear symbologies
- Large document throat allows home printed A4 documents to be readily scanned
- Able to read 2D bar code images on PDAs and cell-phone displays
- Single cable connection to ATB42x keyboard or host PC
- RS232 and USB (serial or keyboard) interface options
- FLASH upgradeable software
- Visible green light & audible good read indication
- Detachable cable
- Options for fixed position installation, offering greater security against theft

Access IS  
18 Suttons Business Park  
Reading, Berkshire  
RG6 1AZ, United Kingdom  
Tel: +44 (0) 118 966 3333  
Fax: +44 (0) 118 926 7281

Access (North America) inc  
PO Box 2569, Peachtree City  
Georgia 30269-2569  
USA  
Tel: +1-770-631-8425  
Fax: +1-678-364-8856

**Access IS**  
Interfacing Solutions

For further information email: [sales@access-is.com](mailto:sales@access-is.com) or visit our website: [www.access-is.com](http://www.access-is.com)

All trademarks acknowledged. Specifications subject to change without prior notice. This literature is for outline information only.

## Connection Options

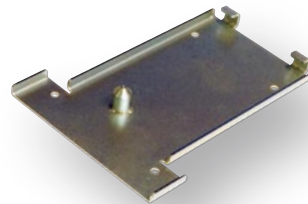
- The LSR120 can be pre-configured to connect to Access ATB42x series keyboards and OCR32x/34x standalone readers. No need to add extra serial ports to PC system units
- Access ATB422/423 series USB keyboards can power the imager directly, without the need for an external power supply
- Also available with configurations for direct connection to Common Use and dedicated airline workstations



LSR120 connects to Access IS ATB2 keyboards and stand alone readers

## Mechanical Connection Options

- The quick-release bracket allows the quick installation of the LSR into a secure base which prevents the LSR from being accidentally knocked out of position or easily stolen or removed



### Common linear bar codes

EAN / UPC, Interleaved 2 of 5, Industrial 2 of 5, IATA 2 of 5, Code 39 and Code 128



### PDF417 2D stacked bar code

The sample PDF417 bar code below contains the Access address



### Aztec 2D bar code

The Aztec bar code below contains sample boarding pass details



## LSR120 2D Bar Code Imager

### Specifications

#### Configured to read the following symbologies

**Linear:** EAN. UPC, Code 2 of 5, Interleaved 2 of 5, IATA 2 of 5, Code 39, Code 128

**2D:** IATA resolution 792, PDF417, Aztec, DataMatrix and QR codes

**Interface options:** RS232 and USB (serial and keyboard)

**Performance:** Will read in full sunlight, and also read 2D bar codes from cell phone displays

#### Mechanical/electrical

**Dimensions:** 18L x 10W x 10H cm

**Weight:** 174 g

**Power:** 4.5 to 5 VDC

**Current (Typical):** 310 mA

**Colour:** Dark grey

**MTBF:** 85,000 hours

#### Environmental

**Temperature:** Operating 0 °C to +50 °C

Storage 0 °C to +60 °C

**Humidity:** 0 to 95%, non-condensing

**Approvals:** FCC Class B, CE EMC Class B, CE Low Voltage Directive, IEC60825-1 LED Safety: Class 1

Ver: 1.4 September 2009

Access IS  
18 Suttons Business Park  
Reading, Berkshire  
RG6 1AZ, United Kingdom  
Tel: +44 (0) 118 966 3333  
Fax: +44 (0) 118 926 7281

Access (North America) inc  
PO Box 2569, Peachtree City  
Georgia 30269-2569  
USA  
Tel: +1-770-631-8425  
Fax: +1-678-364-8856

**Access**   
Interfacing Solutions