

ACR3xB Series Magnetic Stripe Reader

Access' comprehensive range of MSR devices will satisfy all card reading applications.

Description

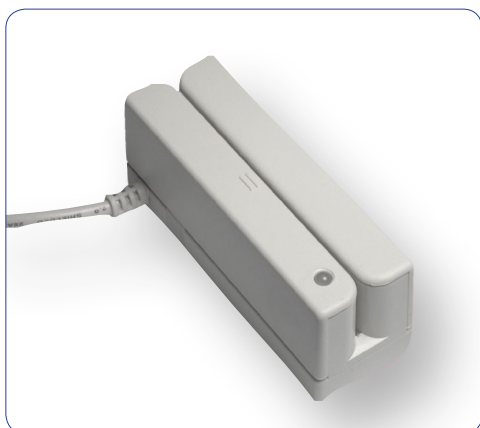
Intuitive to use, the Access IS comprehensive range of magnetic swipe readers (MSRs) read high or low coercivity magnetic cards in either swipe direction.

The range of five products satisfy the majority of all card reading applications with USB, RS232 and PS/2 connectivity. The full range of readers are designed to read credit, loyalty, gift and log-on cards, and any other cards that incorporate a magnetic stripe.

Optional mounting brackets are available to enable the readers to be mounted at almost any angle and integrated into the smallest teller position or desk.

Features

- 2 track ISO7811 compatible encoded card reader
- Compact and high performance
- USB, RS232 and PS/2 compatible versions
- Read status LED
- Reads high and low coercivity cards



ACR31B with the black case option showing a good read

Options

- 3 track versions available
- Low profile version available
- Dark grey case option on all models
- Mounting brackets allowing reading at almost any angle
- Customer logo printing

Applications

- Point of sale credit and debit card transactions
- Access control and time management
- Loyalty schemes
- Club or library membership management
- Reading driving licences
- Computer security

Access IS
18 Suttons Business Park
Reading, Berkshire
RG6 1AZ, United Kingdom
Tel: +44 (0) 118 966 3333
Fax: +44 (0) 118 926 7281

Access (North America) inc
PO Box 2569, Peachtree City
Georgia 30269-2569
USA
Tel: +1-770-631-8425
Fax: +1-678-364-8856

Access 
Interfacing Solutions

For further information email: sales@access-is.com or visit our website: www.access-is.com

All trademarks acknowledged. Specifications subject to change without prior notice. This literature is for outline information only.

Product Selector

Part Number	Interface	Mode	Power
ACR31B	PS/2	Keystrokes	Keyboard interface
ACR32B	RS232	Serial data	External power ²
ACR33B	RS232	Serial data	Port powered
ACR34B ³	USB1.1	Serial data	Port powered
ACR35B ⁴	USB1.1	Keystrokes	Port powered

Notes:

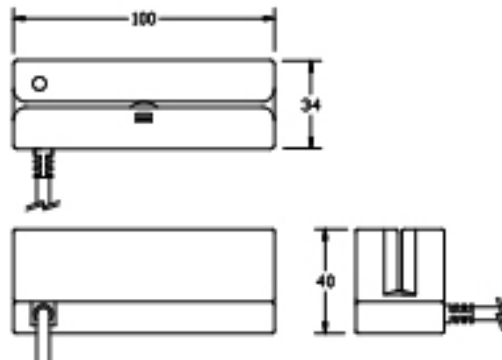
¹ Model colour is pearl white as standard; black cases available on all models

² Available as an option

³ Not suitable for new designs - please refer to ACR76

⁴ Not suitable for new designs - please refer to ACR75

Dimensions



ACR32xB Magnetic Swipe Readers

Specifications

Performance

Card type : magnetic cards per ISO7810, ISO7811, AAMVA, JIS and custom data

Read capability: magnetic stripe 1 and 2 track of low or high coercivity (300 - 4000 Oe). Reading track 3 optional

Card thickness: 0.25 - 1.2 mm

Swipe speed: 10 to 140 cm/second (4 to 55 ips)

Read error rate: <0.5%

Magnetic head life: >500,000 swipe operations

General

Colour: Cool white or dark grey

Dimension: Without base 100L x 34W x 28H mm except ACR32B and 33B
95L x 36W x 34H mm

Weight: 180g except ACR34B and 35B
210 g

Body material: ABS 94V-0

Cable length: 1.5 m

Host interfaces

ACR31B: PS/2

ACR32B & 33B: RS232 connected via DB9 female connector

ACR34B & 35B: USB1.1

Electrical specifications

ACR31B and power requirement:
+5 VDC (+/-10%)

ACR32B: AC power supply supplied

ACR34B and 35B: USB port powered

Power consumption: +5 V 110 mA max

Environmental

Operating temperature: -10°C to 55°C

Storage temperature: -30°C to 70°C

Approvals

Safety: UL 1950 /IEC950

RF/EMI: EN 55022 Class B, FCC Part 15, Subpart B, class A, BSMI EMC Class B

Access IS
18 Suttons Business Park
Reading, Berkshire
RG6 1AZ, United Kingdom
Tel: +44 (0) 118 966 3333
Fax: +44 (0) 118 926 7281

Access (North America) inc
PO Box 2569, Peachtree City
Georgia 30269-2569
USA
Tel: +1-770-631-8425
Fax: +1-678-364-8856

Access 
Interfacing Solutions

For further information email: sales@access-is.com or visit our website: www.access-is.com

All trademarks acknowledged. Specifications subject to change without prior notice. This literature is for outline information only.